

RK ANIMAL SUPPLIES LTD



Tips & Tricks on: Getting to the winners circle

You can select a winning calf , but it's your hard work and dedication that makes a champion.





Never think you will break any animal. A calf that doesn't shy away in a pen and shows curiosity by coming up to you will be easier to train and to lead!

Buying a calf?

You must take the following into consideration:

- What breed do you want to show?
- What age animal do you want to show?
- Do you want to show a steer or a heifer?
- What is your final goal for the show season?
- When making a purchase, make sure to stay in your price range!
- Visit an established breeder to buy from.
- Choose a quiet animal.
- Before you head out to purchase an animal, look in your barn. You may just find something in there that you can be proud of!

Showing? A judges perspective.

The judge likes to see a well presented animal and handler. The animal should be clipped and fit to emphasize its good qualities. Have your animal well trained so that the judge can view the animal both walking and standing.

Don't get discouraged if the judge places you differently then you expected - every judge and every day is different. Try to keep focused on your cattle program, developing what YOU like and what YOU are happy with. This will keep more consistency in your herd and prevent you from following judge's trends.



In the ring?

Protocol & expectations

- Be on time - first impressions are lasting!
- Follow the dress code and all show rules.
- Be courteous to fellow exhibitors both in and out the show ring.
- Always show your positive attitude.
- Have fun while you're showing! If you enjoy yourself, it will show!



Feed grain twice (morning and night) and hay and water three times (morning, noon and evening) each day while at the show. When traveling, feed and water after you have arrived - your animals are more likely to eat and drink.

Feeding & Care of Your Show Animals

Proper feeding routines of a show calf start at birth. Calves should have access to creep fed grain and lactating cows should be supplied a grain supplement. A consistent feeding program will ensure you have a healthy, well conditioned animal when you need it.

Many feed companies have a special feed mix developed for show animals. Always make sure to feed top quality hay and free choice of clean water, salt, and minerals. Keep in mind the following:

- Pick up uneaten feed to prevent overload. This will keep your cattle's appetite more aggressive.
- Show cattle should get lots of exercise. This will help muscle grow and prevent over conditioning. It is easier to try and take weight off cattle, then you aren't trying to catch up one month before the show.
- You should have your animal wormed every 3 months to keep their hair healthy. Consult your local veterinarian concerning a health program.
- Keep your show animal in a clean, well ventilated shelter with outdoor access. This will help keep their skin and hair coat healthy.
- Before you go to your first show, feed your animal from a feed tub and water from a clean water pail. Do not use feed tub or pail for anything else but feeding and watering your animal.

By feeding your show animal a complete feed ration (around 13% protein at the rate of 2% of your animals body weight per day) accompanied by ShowBloom, you will notice that the skin and hair coat take on a healthy and shiny appearance. ShowBloom will help prevent hair from dulling or fading in the summer sun.

Simply feed 8 oz. a day per head!

What is ShowBloom?:

A natural protein supplement rich in brewers yeast and fortified with vitamins.

- Increases feed intake and utilization.
- Promotes healthy skin conditions.
- Aids muscle development and firmness.
- Produces outstanding hair growth and a shiny, healthy coat!



Winning Fill can be fed as the sole ration or with a grain mix! Simply feed prior to or during a show to create the finished look!

What is Wining Fill?

A unique blend of chopped forages, steam-flaked grains, and molasses.

- Feed daily for incomparable bloom, or just prior to showing for a fuller, bigger body look.
- Provide plenty of clean, fresh water at all times

Halter Breaking Your Calf

HINT:
Run the radio in the barn so your calf will get used to noises.

Remember to work around your animal in a calm manner - never raise your voice or hit your calf.

Where to Start?

1. Have the calf in a small area or working chute and halter the calf.
2. Be sure the halter is on properly - it should be high on the bridge of the nose of the calf.
3. Tie the calf's head down the first couple of days. Be sure the rope is not tied with too much slack that the animal could get its front legs tangled.
4. Leave the calf tied for several hours. Be sure to observe the calf several times to make sure the calf is not harming itself.
5. Tying the animal up several days in a row will teach the calf more quickly than if you were tying up with days in between.
6. The Slide Ring Rope Halter allows the rope to slide back and forth through the eye of the halter. Prevents the halter from staying tight on the nose and jaw of the calf while halter breaking.



Keep the halter tied to a proper length so the calf can't get tangled in the slack.



This shows the calf's head at the proper height. The calf can stand comfortably for long periods of time.



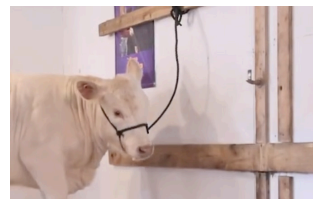
As the calf pulls back on the halter, the tension causes the halter to become tight and uncomfortable.



Avoid
This shows the calf's head positioned too high. This can cause calves to be uncomfortable and can actually create poor behavior.



As the calf quits pulling on the halter, the tension will release on the calf's head and jaw area.



Avoid
This shows the calf's head positioned with too much slack. This can cause injury to the calf if they get their leg caught up in the rope.

Tips on Growing Hair

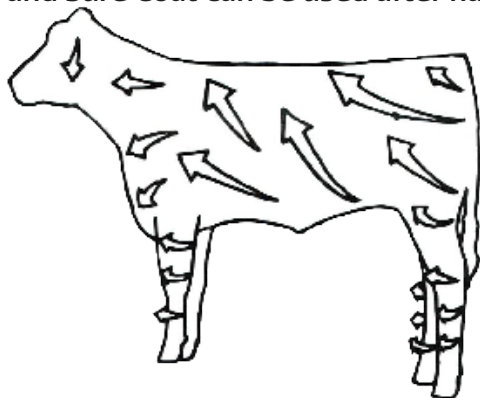
A clean calf will grow hair faster. It is recommended you wash your calf 2-3 times a week depending on how dirty they get. Also be sure to rinse your calf with cold water daily to promote hair growth.

Daily care is needed to start the hair growth process. Routinely rinsing and washing cattle with Sullivan's Clear Choice or Sullivan's Vita Hair Volumizer is important - these products will not strip the hair of its natural oils and shine.

Rinse the calf for at least 5 minutes or longer. Cattle body temperature is 101.5° and it takes some time to cool them down before we can start to promote hair growth. Running water on cattle is called Hydro-Therapy which creates circulation and promotes stimulation. Use a foamer when using Sullivan's Vita Hair Volumizer or Sullivan's Clear Choice. Wash hair in a forward direction. Don't scrub in a circulation motion or the hair will dry with a curl. Conditioner like Sullivan's Hydrator Conditioner can be added at this time using a foamer to keep hair and skin healthy.

After washing and rinsing, brush excess water off the animal in a downward motion, then brush hair forward. Use a rice root brush or Sullivan's Smart Scrub Brush and don't forget the legs.

Blow hair dry in the direction you were brushing. Don't forget to dry the legs and belly. Sullivan's Kleen Sheen, with Infuser mixed in, and Sure Coat can be used after hair is dried.



Combs & Brushes

Other great grooming aids to use are combs and brushes. These combs and daily hair care brushes are used at home to help stimulate the hair by massaging the scalp. All combs and brushes have synthetic material in the plastic teeth that are gentle to the animal's hide.



Sullivan's Roto Brush

When the hair is almost dry, you can use a roto brush to stimulate the new hair growth and speed up the hair training on the body and legs. The staggered design of Sullivan's Roto Brush allows for the fullest body and prevents a matted look. This invigorates the hair and skin to stimulate the hair growth and speed up hair training.



Sullivan's Air Express

The most powerful, most efficient motors available. Comes with a slide in filter cartridge that fits in the rear cap. Aerodynamic and efficient design to increase air velocity and speeding up drying time.



Dandruff?

Spray Sullivan's Double Dip on the hair coat for healthy skin and hair. This product promotes healthy hair coats, stops flaking, conditions skin, eliminates and cuts through soap scum left on the hair. No need to rinse out. Spray hair with Revive 3-4 times a week - this restores the natural oils and conditions dull, dry hair.



Stains?

Sullivan's Natural White - Fantastic for highlighting and enhancing hair. This product brightens white hair and intensifies coloured hair. Use Sullivan's Natural White to wash away yellow tint, sun faded and stained hair.



Sullivan's Knock Out - A powerful instant stain remover. Spray directly onto stained area then brush it in and blow it out.



Let's Start Clipping!

When clipping, it is always better to make more passes than trying to do it all in one stroke.

The Andis Progress clipper is lightweight, used for the head and tail of your animal. The head and legs can be done with any of the small Andis clippers.

When clipping necks and fronts, use a 5/8^{HT} or a 3/4^{HT} Andis blade. These blades will eliminate hours of clipping time for a straight, even cut. Use Andis Super Blocking blade for body and leg clipping. Finish off your clip job by using the Andis Medium Blending blade along the neck area. This blade works best when using the "back dragging" technique.

Don't forget to use Andis Cool Care Plus often to ensure your blades never get dry. Cool Care is a cleaner, coolant, disinfectant, lubricant AND rust protection formula used by professionals to maintain longevity of your blades.

To keep your blades at their best, store blades in a leather blade wallet or blade pouch.

Your animal should be clipped on a regular basis to promote hair growth and shaping of the animals body and leg hair. Clip the animal only after you have washed and dried the hair. When clipping prior to show, keep hair light with product to ensure a crisp clean cut. To give the hair more lift, use Sullivan's Revive, or Sullivan's Game Changer.

Use a blocking chute when fitting your animal - it was designed with the fitter in mind! It is an open concept chute that allows access to all parts of the animal while standing stationary. This chute ensures the safety of the handler during clipping and fitting procedures. You can use the Sullivan's Fitting Mat at shows to keep your knees and feet more comfortable while grooming your animal.



Tips from the Pro's

Sullivan's BLAQ™ Hair Dye:

Refresh your animal's hair back to a long lasting, brilliant black with Sullivan's BLAQ™. This dye was specifically formulated to be a long-lasting dye that, when used properly, won't irritate the skin and hide of the animal. Simply combine contents of both bottles into a spray bottle or blower fogger with Sullivan's Kleen Sheen. Shake well and apply liberally onto the hair coat. Gently work into the hair coat with a Stimulator comb or Massage brush. Leave the dye in the hair for 45-60 minutes, then rinse out with water until the water runs clear. (Also available in Fyre (medium red) or Envy (dark red).

Sullivan's Heavy Duty Pump Up Spray:

Applying BLAQ™ with the Sullivan's Pump Up Sprayer helps apply the dye evenly.

Touch-Up Paints:

As a final touch of colour before entering the show ring, try Sullivan's new colours or Weaver's Maxx Black or Weaver's Base Black.

Sullivan's Powder'Ful:

Powder'Ful will add volume to hair and touch up stained and faded hair. It has a powdery texture and can be used after grooming legs with adhesive.

Adhesives:

Weaver's ProAdhesive Firm is great for leg hair or unmanageable body hair. It dries fast so you can add touch-up colour. Spray on lightly and comb. Repeat for a stronger hold.

Need Adhesive Remover?:

Sullivan's Hocus Pocus, Sullivan's Release, Weaver Pro Refit, and RK Pure Remove It safely remove adhesives and other show day grooming products. They help make clean up quick and easy. They should be washed out with Sullivan's Clear Choice or Volumizer shampoo. Apply Revive to moisturize and rejuvenate those areas that were fitted with adhesives.

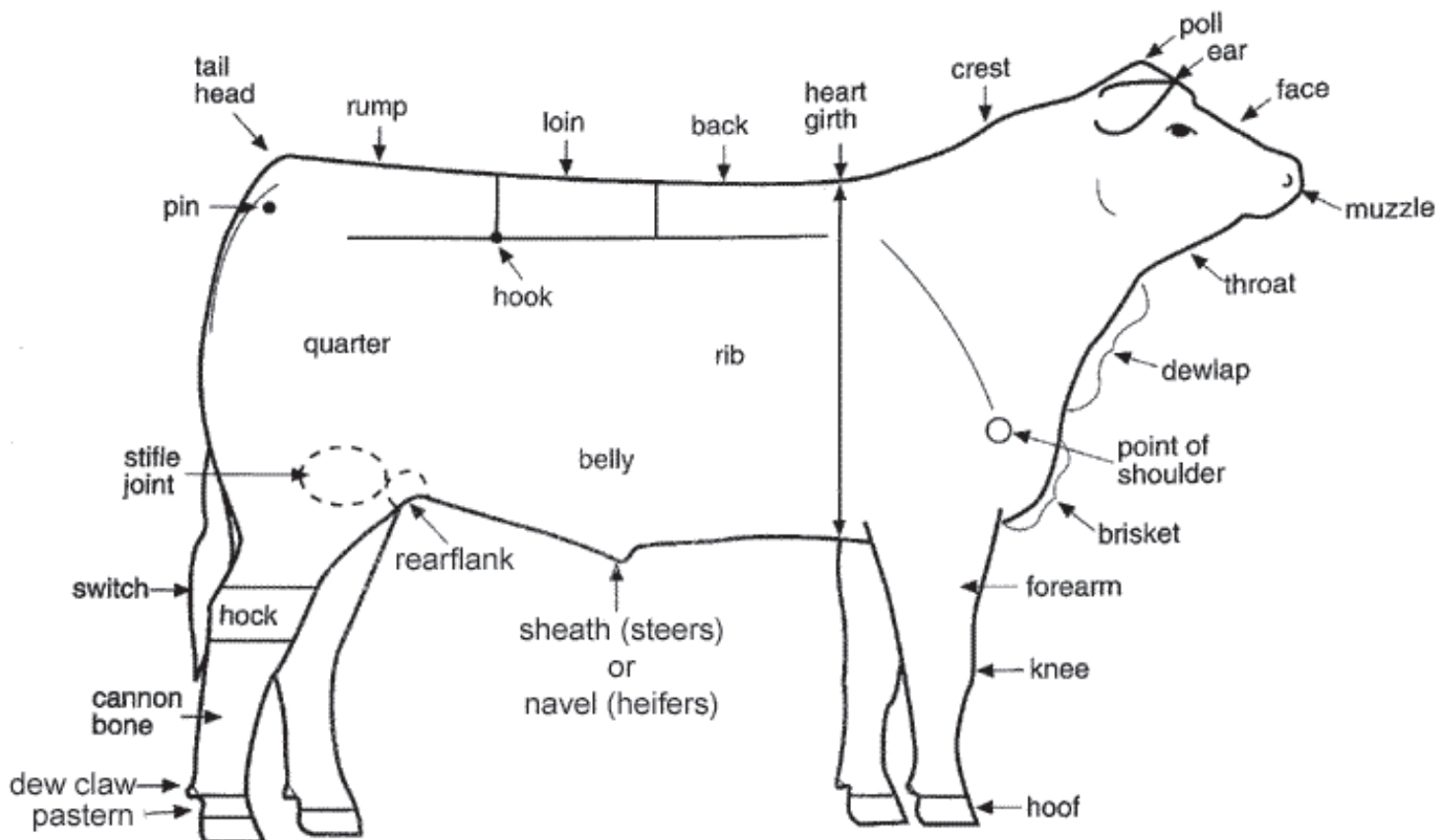
Styling:

To show more volume, spray with Sullivan's Game Changer or Sullivan's Kleen Sheen. Comb into hair coat and blow dry. By adding these products, you can help "pop" the hair. If more body is required, use a light mist of Sullivan's Styling Mousse, comb through and blow dry. Sullivan's Final Bloom or Flare gives great shine and highlights to any dull hair coat. Use Sullivan's Game Changer to get real hair pop and shine without the oil residue. Spray into the hair coat and work with a blower for 5-10 minutes.



Do you Know the parts of your calf?

Know what your dealing with before you start clipping!





CLIPPING YOUR HEIFER FOR SHOW 101



Step One -The Tail Clip

The starting point on the tail is where the twist starts to split. Clip up from there, gradually blending the tail into the tail head. DO NOT shave up too high. Make sure to blend your starting point down into the non-shaved part of the tail. Clip every side of the tail, including underneath. Use an Andis Medium Blending Blade.

Step Two -The Butt

The object here is to add longer, flatter muscle shape from the side profile and add width from behind. Standing behind the heifer, start at the high spot/round spot and clip up or down from there. Clipping up and down will give the heifer the flat shape. By clipping in an outward motion, you will give her more width. Use an Andis Super Blocking Blade

Step Three -The Back Legs

Start at the side of the hock. Clip the hock down tight and smooth (but not to the skin). This technique will make your heifer appear smooth jointed. Next, clip from the side of the hock up into the lower quarter; this should be a flat line when viewed from behind. Clip the back of the hock down, smooth and tight (but not down to the skin). Again, this helps your heifer appear smooth jointed and correct from hock to hoof. Blend from here up into the heifers lower quarter at a slight angle. At the front part of the leg, from the pastern up, simply clean up the long hairs and blend the leg into the flank. This gives the leg more of an angle from the side, not appearing too straight. Use an Andis Super Blocking Blade.

Step Four -The Lower Quarter

Start by blending your butt/flat line (step 2) into your lower quarter. This will give the heifer some muscle shape from the side view and from behind. From the back, simply blend in from the leg up into the lower quarter, giving flare/shape to the lower quarter. Use an Andis Super Blocking Blade.

Step Five -The Hip/Tail Head

First, find your high point. Typically, the high point is a growth bone or the tail head. Take it down to give you a guide of how deep you need to go on your top. Starting at your high point, go to a gradual incline into the tail head giving your heifers hip length and squareness. At the back of the tail head, you want a straight line that rounds into the top. Use an Andis Super Blocking Blade.



CLIPPING YOUR HEIFER FOR SHOW 101



Step 6 – Guarding the Shoulder and Neck

When blending the shoulder, start at the point of her shoulder moving up towards the top of her shoulder. **Clip everything from the line forward to her cheek.** Use an Andis Super Blocking Blade.

Step Seven –The Top of The Shoulder/Neck

Find the top of the shoulder; this is your high spot. Take this down tight and smooth. Blend the hair from this high spot into the shoulder/ neck junction to her neck crest. Continue blending hair to the back of her poll. Smooth any lines of long hairs with your Andis Super Blocking Blade. Start with an Andis Medium Blending Blade and fine tune with the Super Blocking.

Step Eight –The Chest/Throat

Start on the side of the heifers cheek with a Medium Blending Blade. Turn your clippers over to clip everything in front of the line tight. Only go forward to her halter line still using the same blade, blending everything from her cheek to her throat, and down into her chest floor. This technique will give your heifer a cleaner, more feminine front one-third. Using your Super Blocking Blade, blend all your lines and long hairs into your areas that were clipped with the Medium Blending Blade. Start with an Andis Medium Blending Blade and fine tune with the Super Blocking.

Step Nine –The Front Legs

Starting at the side of the knee, clip the long hairs off to the point of her shoulder. On the front part of her knee, clip with some angle to the front of her shoulder. On the back side, clip off the long hairs, putting a 45° angle down to her dew claw. Use an Andis Super Blocking Blade.

Step Ten – The Belly Underline

The navel is a good place to start on the underline. This will be the heifers deepest point. From here back into her udder, you want a nice swoop, slightly curving up. Back in the udder area, turn your clippers over to knock out any stray hairs and expose the heifers teats. You want the line from her navel forward to her chest floor to be level. This will make the heifer appear fuller in her fore rib. Be careful not to clip too tight in the fore rib and heart areas. Use an Andis Super Blocking Blade.



CLIPPING YOUR HEIFER FOR SHOW 101

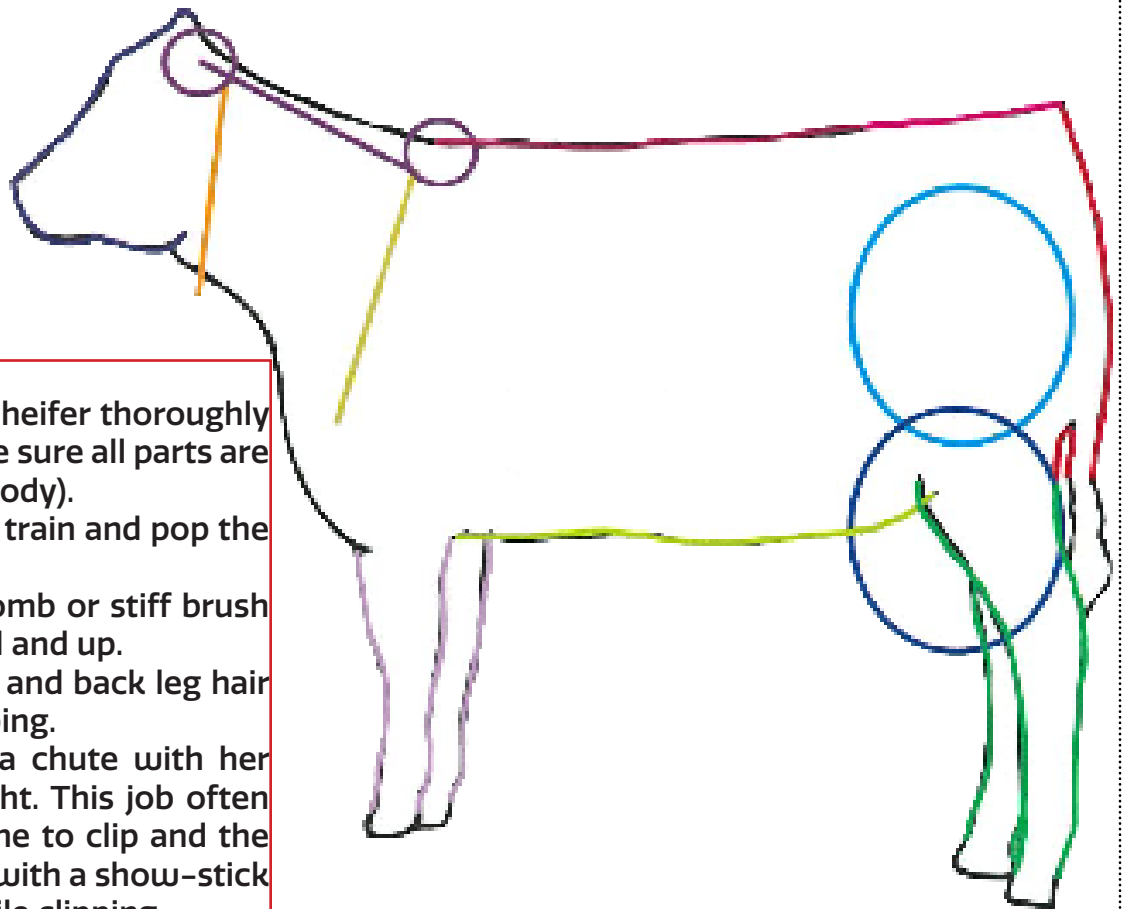


Step Eleven -The Body

Always clip using the widest point first. When clipping the side of her butt and hip, you want to take-off all the long stray hairs which help make her hip look more square. From her hip to her heart and down into her belly line, again clip off the long hairs. This adds rib shape. Be careful not to clip too much hair from behind the shoulders or heart area. Use an Andis Super Blocking Blade.

Step Thirteen -The Head

On the face between the top of her nose to between her eyes -clip against the grain. Clip as tight and smooth as possible. Blend the hair into her poll for a nice, clean point. On the sides of her face, blend in all long hairs to her cheek. Also make sure to clean all hairs under her nose, back into her jaw.



BEFORE YOU START

- Wash and dry your heifer thoroughly before clipping. Make sure all parts are dry (legs, belly, and body).
- Use a rota brush to train and pop the hair before clipping.
- Use a stimulator comb or stiff brush to work hair forward and up.
- Always brush front and back leg hair to help train for clipping.
- Tie your heifer in a chute with her head at natural height. This job often requires 2 people; one to clip and the other to scratch her with a show-stick to keep her calm while clipping.



CLIPPING YOUR HEIFER FOR SHOW 101

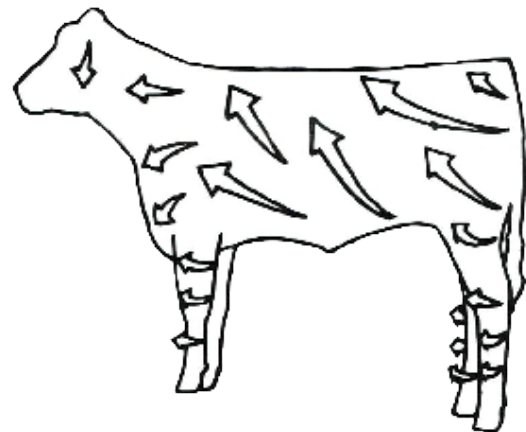


BEFORE YOU START

1. All animals should be washed and blown dry before you start fitting for show.
2. Make sure to read all the show rules to know exactly what products are allowed to be used; different shows have different rules.
3. Give yourself extra time for fitting. Animals and handlers will be more relaxed if you're not rushed.
4. Pre-clip animal at home before going to a show.

TIPS TO REMEMBER

- After hair has been glued and popped, additional clipping may be required to smooth out any unwanted hair. Remember – all show day products should be removed with glue remover and shampoo.
 - Use Weaver Firm on legs, tail head and tail for that extra hold. A powder type product can be used as a filler on legs and tail head. You can then cover with a suitable touch-up colour.
 - Mousse the body hair and dry before using glue.
 - Comb the hair from back to front until hair will naturally pop. Sensation brushes or stimulator fluffer combs work well to achieve the desired pop.
 - Roto brush front and back legs to work and pop hair. You can also use the roto brush on the body if there are spots on the body that need pop.
- Many hair poppers can be used for body hair. Always comb in and blow forward with blower to help achieve the desirable hair pop.
 - Sweat Collars work well to clean up the throat area. Leave on for 12 hours, then remove and leave off for 12 hours. Repeat daily.
 - Cool Collars or Arctic Ice Packs are designed to cool the animal which will help to promote hair growth.



AVAILABLE AT RK ANIMAL SUPPLIES





CLIPPING YOUR Steer FOR SHOW 101



Step One -The Tail Clip

The starting point on the tail is where the twist starts to split. Clip up from there, gradually blending the tail into the tail head. DO NOT shave up too high. Make sure to blend your starting point down into the non-shaved part of the tail. Clip every side of the tail, including underneath. Use an Andis Medium Blending Blade.

Step Two -The Butt

The object here is to add longer, flatter muscle shape from the side profile and add width from behind. Standing behind the heifer, start at the high spot/round spot and clip up or down from there. Clipping up and down will give the heifer the flat shape. By clipping in an outward motion, you will give her more width. Use an Andis Super Blocking Blade

Step Three -The Back Legs

Start at the side of the hock. Clip the hock down tight and smooth (but not to the skin). This technique will make your heifer appear smooth jointed. Next, clip from the side of the hock up into the lower quarter; this should be a flat line when viewed from behind. Clip the back of the hock down, smooth and tight (but not down to the skin). Again, this helps your heifer appear smooth jointed and correct from hock to hoof. Blend from here up into the heifers lower quarter at a slight angle. At the front part of the leg, from the pastern up, simply clean up the long hairs and blend the leg into the flank. This gives the leg more of an angle from the side, not appearing too straight. Use an Andis Super Blocking Blade.

Step Four -The Lower Quarter

Start clipping the lower quarter from the side. Clip it at a gradual, slight turn-up, blending into to the butt. This gives the steer more muscle shape from the side. When standing from behind, clip the stifle with shape, blending down into the leg. The objective is to give muscle shape and flare to the stifle. Use an Andis Super Blocking Blade.

Step Five -The Hip/Tail Head

First, find your high point. Typically, the high point is a growth bone or the tail head. Take it down to give you a guide of how deep you need to go on your top. Starting at your high point, go to a gradual incline into the tail head giving your steers hip length and squareness. At the back of the tail head, you want a straight line that rounds into the top. Use an Andis Super Blocking Blade.



CLIPPING YOUR Steer FOR SHOW 101



Step 6 – Guarding the Shoulder and Neck

Find the top of the shoulder and the top of his crest; these are your high points. Take these down smooth. By taking the top of the shoulder down smooth, this will add width and dimension down his top and over his shoulder. Blend the hair from this high spot of the shoulder into his high spot of his crest. Continue blending his hair to the back of his poll. Start with an Andis Medium Blending Blade and fine tune with the Super Blocking.

Step Seven –The Top of The Shoulder/Neck

Start underneath your steers chin and nose. Shave everything from there down to his chest floor smooth. This gives your steer a cleaner more extended look to his front end. Next, shave the hair tight between the front legs and the chest floor to give an appearance of a cleaner chest and a wider based steer. Start with an Andis Medium Blending Blade and fine tune with the Super Blocking.

Step Eight –The Chest/Throat

When blending the shoulder, start at the point of his shoulder, moving up into the halter line at the chin. Your goal in blending the shoulder and neck is to make the steer smoother shouldered with a cleaner, more extended front 1/3. Use an Andis Super Blocking Blade.

Step Nine –The Front Legs

Starting at the side of the knee, clip the long hairs off to the point of his shoulder. On the front part of his knee, clip with some angle to the front of his shoulder. On the back side, clip off the long hairs, putting a 45° angle down to his dewclaw. Use an Andis Super Blocking Blade.

Step Ten – The Belly Underline

The navel is a good place to start on the underline. When clipping the steers underline, you want to make the steer appear as full in his flank and level into his chest floor as possible. This keeps him balanced from end to end. Starting at the navel, clip a slight curve to the back of the flank. Then from the navel forward, clip a level line into the chest floor. The goal is to make your steer appear more balanced and fuller in his underline. Use an Andis Super Blocking Blade.



CLIPPING YOUR Steer FOR SHOW 101



Step Eleven -The Body

A tip before you clip your steers top line, lead him around and watch him more. While on the move, note the high points. Those areas will need to be clipped down tighter. Starting at your steers high spot from Step Five - the growth bone or tail head - you want to tie his top line into his high spot at Step Seven - his point of shoulder. In market steers, you want to clip the loin area wide and smooth from the hip to the top of his shoulders. This will help make your steer look like he has a square hip, bigger loin and more width down his top line. Use an Andis Super Blocking Blade.

Step Thirteen -The Head

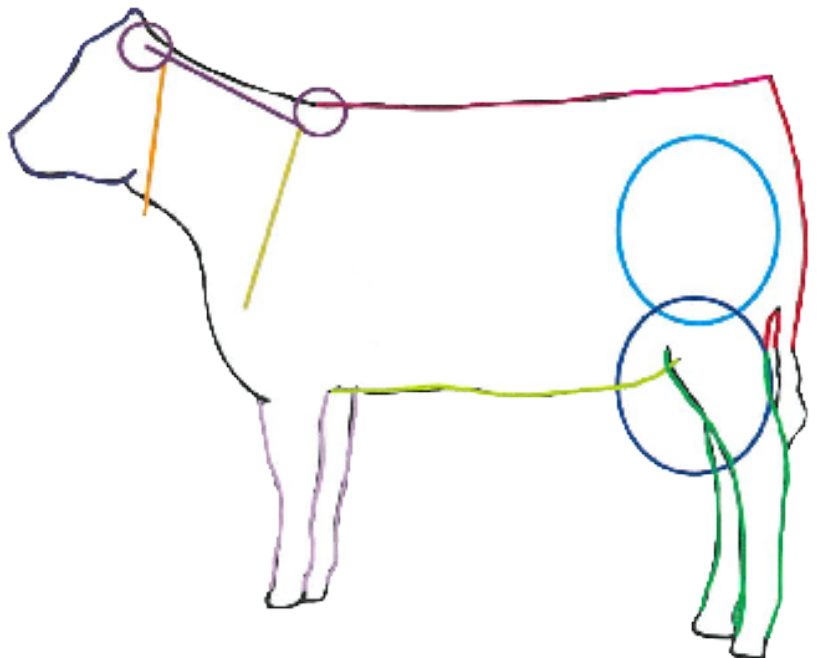
Always clip the widest point first. When clipping the side of his butt and hip, you want to take-off all the long stray hairs which help make the hip look more square. From his top line down to his belly line you want to clip his sides down smooth. When viewing him from behind, make sure his belly does not appear bigger than his butt, ultimately looking stouter and thicker and adding balance. Use an Andis Super Blocking Blade.

Step Thirteen -The Head

On the face between the top of his nose to between his eyes - clip against the grain. Clip as tight and smooth as possible. Blend the hair into his poll for a nice, clean point. On the sides of his face, blend in all long hairs to his cheek. Also make sure to clean all hairs under his nose, back into his jaw.

BEFORE YOU START

- Wash and dry your steer thoroughly on the day you plan on clipping.
- Brush all the hair forward with a Rice Root Brush and a Sullivan's Stimulator Comb.
- Blow animals hair forward until completely dry. Make sure hair is dry to the hide. Don't apply any oils on the hair before clipping. This allows for a crisper cut.
- Make sure the environment you are clipping in has good lighting, floor is level, and your calves head is at a natural height.
- If your animal has a lot of hair, allow yourself 2 days to clip.





CLIPPING YOUR Steer FOR SHOW 101

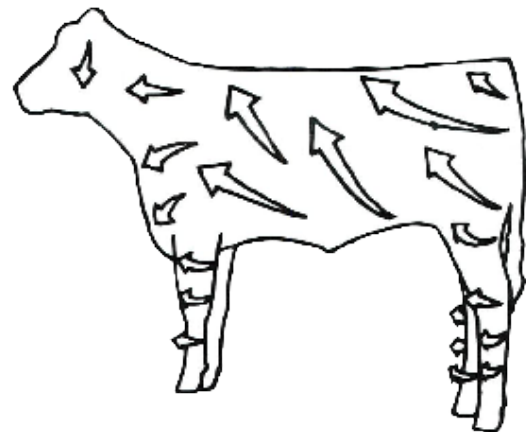


BEFORE YOU START

1. All animals should be washed and blown dry before you start fitting for show.
2. Make sure to read all the show rules to know exactly what products are allowed to be used; different shows have different rules.
3. Give yourself extra time for fitting. Animals and handlers will be more relaxed if you're not rushed.
4. Pre-clip animal at home before going to a show.

TIPS TO REMEMBER

- After hair has been glued and popped, additional clipping may be required to smooth out any unwanted hair. Remember – all show day products should be removed with remover and shampoo.
 - Use Weaver Firm on legs, tail head and tail for that extra hold. A powder type product can be used as a filler on legs and tail head. You can then cover with a suitable touch-up colour.
 - Mousse the body hair and dry before using glue.
 - Comb the hair from back to front until hair will naturally pop. Sensation brushes or stimulator fluffer combs work well to achieve the desired pop.
 - Roto brush front and back legs to work and pop hair. You can also use the roto brush on the body if there are spots on the body that need pop.
- Many hair poppers can be used for body hair. Always comb in and blow forward with blower to help achieve the desirable hair pop.
 - Sweat Collars work well to clean up the throat area. Leave on for 12 hours, then remove and leave off for 12 hours. Repeat daily.
 - Cool Collars or Arctic Ice Packs are designed to cool the animal which will help to promote hair growth.



AVAILABLE AT RK ANIMAL SUPPLIES





DREAM TO WIN



WORK HARD



ENJOY THE RESULTS

RK is always available to answer your showing and fitting questions!

RKANIMALSUPPLIES.COM

RK ANIMAL SUPPLIES LTD

ORDER ONLINE!

FAST, DEPENDABLE SERVICE.
REASONABLE PRICES.
CANADA-WIDE SHIPPING.



2026 MAIL ORDER
CATALOGUE NOW
AVAILABLE ON OUR
WEBSITE!



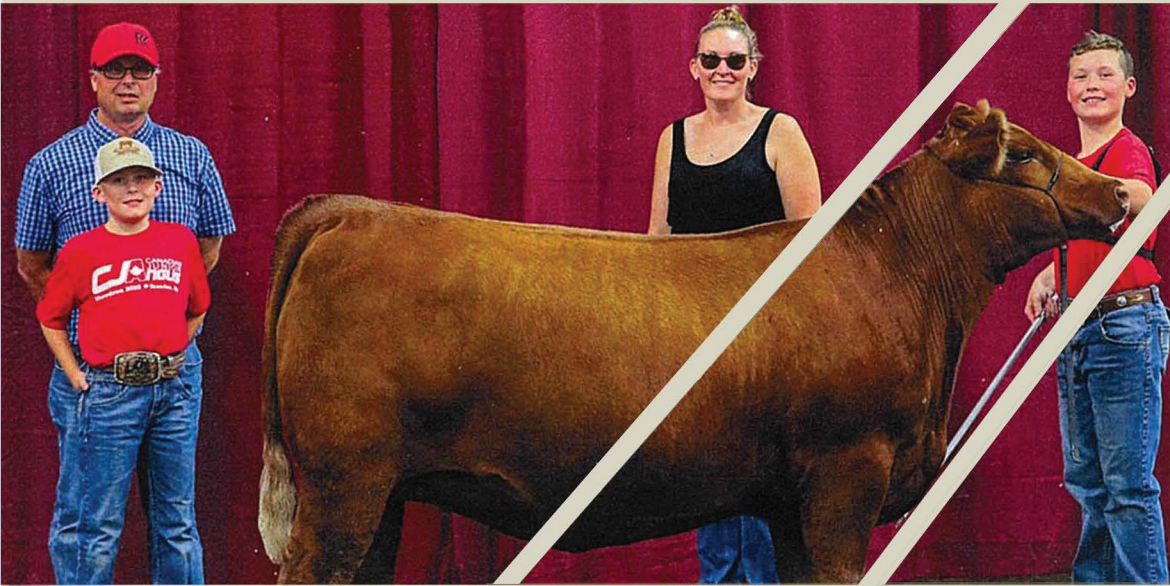
FOLLOW US ON FB FOR THE **NEWEST PRODUCTS, SPECIALS AND UPDATES**

7647 Wellington County Road #10, Moorefield, Ontario, N0G 2K0

EMAIL rkanimalsupplies@xplornet.com

TOLL FREE 1-800-440-2694

PREMIUM QUALITY BEEF CATTLE PUREBRED BLACK AND RED ANGUS & SIMMENTALS



WHEN YOU PURCHASE AT RK, REST ASSURED THAT EVEN AFTER YOU GET HOME, YOU WILL HAVE US AVAILABLE TO ANSWER ANY QUESTION YOU MAY HAVE AS WELL AS GIVE ADVICE ON BREEDING SELECTIONS, FEEDING, GROOMING AND SHOWMANSHIP. AS IN THE PAST, ALL SALE CALVES ARE HALTER BROKE AND READY TO BE A PART OF YOUR SHOW STRING OR BREEDING PROGRAM.

KNOWN FOR THEIR BACK TO THE **BASICS** **ATTITUDE**

Stop by the farm and see what we have to offer you - *we have calves for sale!*

Contact us if you'd like assistance or need any help!



SANDY REID - OWNER AND OPERATOR
519-588-7560
GUS REID - CATTLE CONSULTANT
519-591-4853
MOOREFIELD, ONTARIO

Show Equipment Checklist:

- Blower
- Blocking Chute
- Turbo Fan
- Fork
- Shovel
- Broom
- Extra Rope Halter
- Extra Necktie
- Water Bucket
- Feed Pan
- Clippers
- Blades
- S/S Smart Comb
- S/S Smart Fluffer
- Smart Sensation Brush
- Show Halter
- Scissors
- Extension Cord
- Show Stick
- Water Hose
- Tail Clamp
- Shampoo
- Sullivan's Tail Adhesive
- Sullivan's Styling Mousse
- Sullivan's Final Bloom
- Sullivan's Flare
- Sullivan's Revive
- Sullivan's Game Changer
- RK Pure Remove It
- Touch-Up Colours

EDUCATIONAL FLYERS AVAILABLE AT RK



RK ANIMAL SUPPLIES LTD
 7647 WELLINGTON COUNTY RD 10,
 MOOREFIELD, ONTARIO, NOG 2K0
 1-800-440-2694

RKANIMALSUPPLIES@XPLORNET.COM ~ WWW.RKANIMALSUPPLIES.COM