

RK ANIMAL SUPPLIES LTD



Tips & Tricks on: Getting to the winners circle

You can select a winning lamb, but it's your hard work and dedication that makes a champion





Never think you will break any animal. A lamb that doesn't shy away in a pen and shows curiosity by coming up to you will be easier to train and to lead!

Choosing Your Lamb

You must take the following into consideration:

- When selecting a lamb, be aware of wool length and fat thickness. If possible, select your club lamb after shearing. Young lambs that are bloomy and fat always look good, while young lambs that are thin do not.
- It is important to know something about the lamb producer. Do not hesitate to ask questions about the lamb's bloodlines and the age of the lamb.
- Consider the following when selecting a lamb: classification, muscle, structural correctness, style and balance, and growth potential.
- When selecting a lamb for purchase, remember that you should be confident that the lamb will classify.

Showing

A judges perspective

The judge likes to see a well presented animal and handler. The animal should be clipped and fit to emphasize its good qualities. Have your animal well trained so that the judge can view the animal both walking and standing.

Don't get discouraged if the judge places you differently than you expected – every judge and every day is different. Try to keep focused on your program, developing what YOU like and what YOU are happy with. This will keep you more consistent and prevent you from following judge's trends.



In the Ring

Protocol & expectations

- Be on time – first impressions are lasting!
- Follow the dress code and all show rules
- Be courteous to fellow exhibitors both in and out of the show ring.
- Always show your positive attitude
- Have fun while you're showing! If you enjoy yourself, it will show!



Feeding & Caring for Your Show Animals

You have a choice of feeding a commercially prepared ration, mixing your own, or feeding a county ration that has been mixed and is sold by the local feed store. If you are raising only one or two lambs, it is not feasible to buy all the ingredients and hand mix the ration. There are many complete commercial rations available that will do a satisfactory job. Remember that there is no such thing as a "magic" ration. Find a balanced ration, learn how to feed it and learn how your lambs respond to it.

At the time of purchase, many young lambs, especially range lambs, will not know how to eat feed from a feeder. These lambs should be started on good, leafy alfalfa hay that is top dressed with a preconditioning pellet. After 2 or 3 days, slowly change these lambs to the concentrate that you have chosen. Hay can be fed during the first part of the feeding program, but should be eliminated at the later stages to prevent lambs from getting a large stomach. Feeding is a daily responsibility and the program should be changed as needed to maximize results. To monitor your results, weigh lambs on a regular basis.

Never make abrupt changes in the feeding program. Gradual changes are more desirable so lambs stay on feed and continue to develop.

Feeding and exercise go hand in hand. Exercise is an excellent way to condition and tone your lambs, and help control fat deposition. In an exercise program, your goal is to run the lambs just long enough to get adrenalin running through their bodies. This helps develop muscle.



Show FreshH2O™ is a quick and easy solution for eliminating free chlorine and related odors from municipal drinking water. Chlorine can lead to reduced water consumption, dehydration, and poor performance at shows. Show FreshH2O™ is a convenient pour and go treatment option, so you don't have to worry about hauling water to shows or using unreliable water filters.

ShowBloom is most effective if fed year-round and we recommend feeding ShowBloom as part of the everyday ration. You will notice that the skin and wool will take on a healthy and shiny appearance. One tub will last you over 200-250 days.

Sheep: 2 oz. ShowBloom per day
Lambs: Start feeding ShowBloom as soon as you put your lambs on feed. Feed 1 oz. for one week, then gradually increase to 2 oz. per feeding.

What is ShowBloom?:

A natural protein supplement rich in brewers yeast and fortified with vitamins.

- Increases feed intake and utilization.
- Promotes healthy skin conditions.
- Aids muscle development and firmness.
- Produces a healthy coat!



Training Your Show Lamb

HINT:
Do NOT
practice too much
when teaching a
lamb how
to brace.

Remember to work around your animal in a calm manner – never raise your voice or hit them

Where to Start...

1. Halter breaking is an excellent way to begin the gentling process, especially if you have several lambs. Lambs should be caught, haltered with a rope halter, and tied to a fence. Do not tie the lambs where they can hurt themselves and do not leave tied lambs unattended. While a lamb is tied, you can place the lamb's feet properly and get it accustomed to setting up.
2. After the lamb begins to gentle, you can start teaching it to lead. This is done with one hand under its chin and the other hand on the back of its head. Have someone assist you by patting the lamb on its dock whenever it stops. When you are comfortable leading the lamb, you can learn to position your hands in a way that holds the lamb's ears forward. This will give the judge the impression that the lamb is long necked and very stylish. Lead with your arm extended and with your body 1 to 2 feet from the lamb.
3. The next step in the training process is to lead the lamb without a halter and properly set it up. Set the hind legs first, then place the front legs, keeping the body and neck straight and the head in a high, proud position with ears up and forward. You should remain standing at all times. Do not squat or kneel.
4. After a lamb is trained to lead, set up, and remain set up while you move around it, the lamb is ready to be taught to brace or push when pressure is applied to its neck or chest. A lamb must push or brace itself when the judge is handling it. A constant, steady pressure is desirable because it helps the judge better evaluate the lamb. Keep the lamb's front feet on the ground when bracing.
5. After training is complete, you may wish to practice showing the lamb. You can set up your lamb and show it while someone else handles it, making sure the lamb responds. If the lamb responds properly, return it to the pen and do not overwork it.
6. Lambs should be exercised extremely hard and fast for short distances of 350 to 450 yards. In an exercise program, your goal is to run the lambs just long enough to get adrenalin running through their bodies. This helps develop muscle. If you exercise the lambs too long, you will pass this point and start to tear down muscle rather than develop it.
7. Exercise programs should begin 2 to 3 months before the show, depending upon the ration fed and the condition of the lambs. Do not make the mistake of exercising lambs before they are properly conditioned.

Your planning, selection, feeding, fitting, training and grooming have brought you and your lamb this far – to the show ring. Now, your skill in exhibiting your lamb – showmanship – cannot be emphasized too strongly! It is often the difference between winning and losing.



Tips on Fitting your Lamb

Fitting lambs for show requires more than simply shearing them. Lambs, regardless of breed, should be washed prior to shearing

Sullivan's Clear Choice is a mild shampoo perfect for use on sensitive skin. It will not leave the skin dried out or irritated.

Sullivan's Bright Lights takes away yellow tints and stains leaving behind a beautiful luster.

Sullivan's Silk is a tremendous product for show lambs as it adds the ultimate silky smooth handle to the lambs skin.

Sullivan's White Out is a liquid whitening hair polish. It delivers a renewed white appearance to dull white hair and skin.

Sullivan's Cool Blue is a terrific show day product for lambs; spray evenly over entire body for a great shine and a fresh firm feel to the hide.

Sullivan's Healthy Hide Lotion is used for after shearing to help condition the hide on lambs. It's ability to penetrate deep into the hide allows for this lotion to heal skin cracks and abrasions for a tighter, firmer look.

Sullivan's Knock Out is a waterless shampoo. It does not require rinsing.

Sullivan's Sugar Coat is a whitening spray that offers a natural appearance.

Blanketing your lamb will help to distribute the natural oil throughout the fleece, and aids in keeping your sheep clean. Before blanketing your lamb, use a curry comb or brush to remove surface dirt.



Wool Breeds

Shearing: Wool breeds are not shorn, they are shown in full fleece.

Washing: Long wool breed lambs should not be washed because oils in the fleece are a natural form of protection.

Trimming: Full fleeced lamb should be dampened, and chaff picked out and locks separated. Part wool down the center of the back. Trim dock, chest and wool tips. Trim their feet at home a week before show day.

Short Wool Breeds

Shearing: This is done six to eight weeks before show time. This will eliminate most of the work of cutting wool to the proper length by trimming.

Washing: Wash your lamb one week before a show. This makes trimming easier.

Trimming: About three hours work is required to trim market lamb if it was shorn early in the project. Trim their feet at home a week before show day.





Washing your Show Lamb

HINT:
Make sure all
shampoo has
been
rinsed out!

Remember to work around your animal in a calm manner – never raise your voice or hit them

Where to Begin...

1. Assemble all of your supplies in the washing area.
2. Make sure there is proper drainage.
3. If you have access to warm water, it will work best to remove the lanolin that can hold dirt, particularly on the belly areas.
4. Start at the neck and gently work your way down the animal so the water runs down and drains away.
5. Be careful not to get soap and water into the lamb's eyes or ears.
6. Go slowly and let the lamb get used to the water.
7. Use a mild shampoo like Sullivan's Clear Choice and create a lather using your hands or stiff brush.
8. Start by rubbing gently, but firmly in circular motions.
9. Pay attention to the belly, under the legs and crotch areas.
10. Use a cloth to wash the lamb's face.
11. Make sure to rinse well – soap left on the skin can be irritating.
12. The water should run clear when the soap is all gone.
13. Dry the lamb with a cloth to remove excess moisture. You can use a blower if you'd like, but make sure to keep it moving so you don't burn the lamb's skin.
14. Keep the lamb in a clean, well-bedded pen filled with plenty of clean, dry bedding until show time. Cover the lamb with a blanket or lamb tube to keep the straw or shavings out of the fleece.

Carding your Lamb

The card is a special tool used for straightening wool fibers for fitting show lambs. The "hooks" on the card are used to stand up the fibers so they can be trimmed evenly. To use a wool card, hook your thumb around the handle of the card and place your fingers solidly along the back of it. Your fingers support and keep the card in position as you work.

Catch the end of the wool fibers with the hooks on the card and lift gently. Do not catch the fibers too deeply as this makes for hard work and can be painful for the lamb. Carding makes the fleece stand up so it is easier to trim. Go slowly at first until you get the feel of it – never try to rake the card through the fleece.



Let's Start Shearing!

When shearing, it is always better to make more passes than trying to do it all in one stroke

Fitting lambs for show requires more than simply shearing them. A clean fleece is easier to shear and extends the life of clipper blades. Be careful to remove all soap when rinsing.

Wash and shear lambs as close to the show day as possible. Most of the major shows do not allow washing after arrival on the show grounds. Lambs that are sheared frequently have a greater tendency to wrinkle or become loose hidied.

A blow dryer may be used to hasten drying time. A bath towel is adequate for drying short fleeced lambs in warm weather. Lambs that have a tendency to wrinkle should not be dried with a blow dryer.

Shearing can be done while the lambs' wool is still damp. Clippers will perform better in loose, damp wool. A pair of electric clippers fitted with a 20-tooth goat comb and 4-point cutter or a 24-tooth comb and 4-point cutter should be used to ensure smoother, more attractive lambs.

Lambs should be sheared smooth. While shearing, the clippers should run parallel to the length of the body rather than vertically. Shearing parallel to the length of the body makes lambs appear balanced and longer bodied. Wool below the knees and hocks should not be shorn. This "boot" can be carded out and blended in with hand shears or electric clippers. Leaving the wool on the legs also improves the balance and "eye appeal" of lambs. Small animal clippers may be needed to clip closely around the eyes, ears or delicate areas.

Immediately after shearing, cover each lamb with a lamb tube or blanket. A clean, well-bedded pen should be provided to keep lambs clean and dry.



How to Handle Your Lamb

Where to Start...

You will need to let your lamb get used to you over the course of several weeks. At first, visit your lamb a few times a day and slowly work your way up to being able to pet your lamb. Be gentle, and after about 2 weeks of being near your lamb, you can start patting it and getting your lamb used to you running your hands up and down its legs and around its body.



Step 1 - Moving your Lamb

To move your lamb, stand on its left side, grasp it under the chin with your left hand and put your right hand on its dock. Guide the lamb with your left hand and move it by pressing on its dock with your right hand. Never work your lamb for long periods of time or it will become restless and stubborn.



Step 2: Setting your Lamb Up

In the show ring, the lamb should stand quietly with the front and hind legs set squarely under the 4 corners of the animal. The head should be held up. Always work on the side of the lamb opposite to the judge! Set the lamb by moving its feet into the proper position. Practice this often for short periods of time.



Step 3: Bracing your Lamb

Bracing is a term that means having the lamb hold its back rigid when someone presses on it. Stand in front of your lamb and cup its chin in your hands. Pull downward with your hands and apply enough backward pressure to cause the lamb to arch or bend its back. Do not choke the lamb or grasp so hard that you hurt the animal. The show person should put their knee against the brisket to prevent the lamb from bolting when the judge handles the lamb.

Sheep Cards

The card is a special tool used for straightening wool fibers for spinning, weaving as well as for fitting show lambs. On a show lamb the 'hooks' on the card are used to stand up the fibers so they can be trimmed evenly. To use a wool card hook your thumb around the handle of the card and place your fingers solidly along the back of it.



Lamb Tubes

Lamb tubes are made from a poly and spandex blend for the perfect fit and stretch. They are used to keep the hide tight and clean until show time. Available in an assortment of colours and patterns.



Sheep Halters

Strong enough for breaking and washing, yet stylish enough for showing on larger more mature sheep. Adjustable for lambs and adult sheep.



Shearing?

The purpose of trimming a lamb is to remove fleece over the entire body according to your show rules. Trimming is one way to help make your lamb's body look smooth and uniform. Most market lambs are shorn very close to show their natural muscling. Know the grooming rules for your show. Some rules state that lambs must be slick shorn or that wool must be a certain length.



Sugar Coat

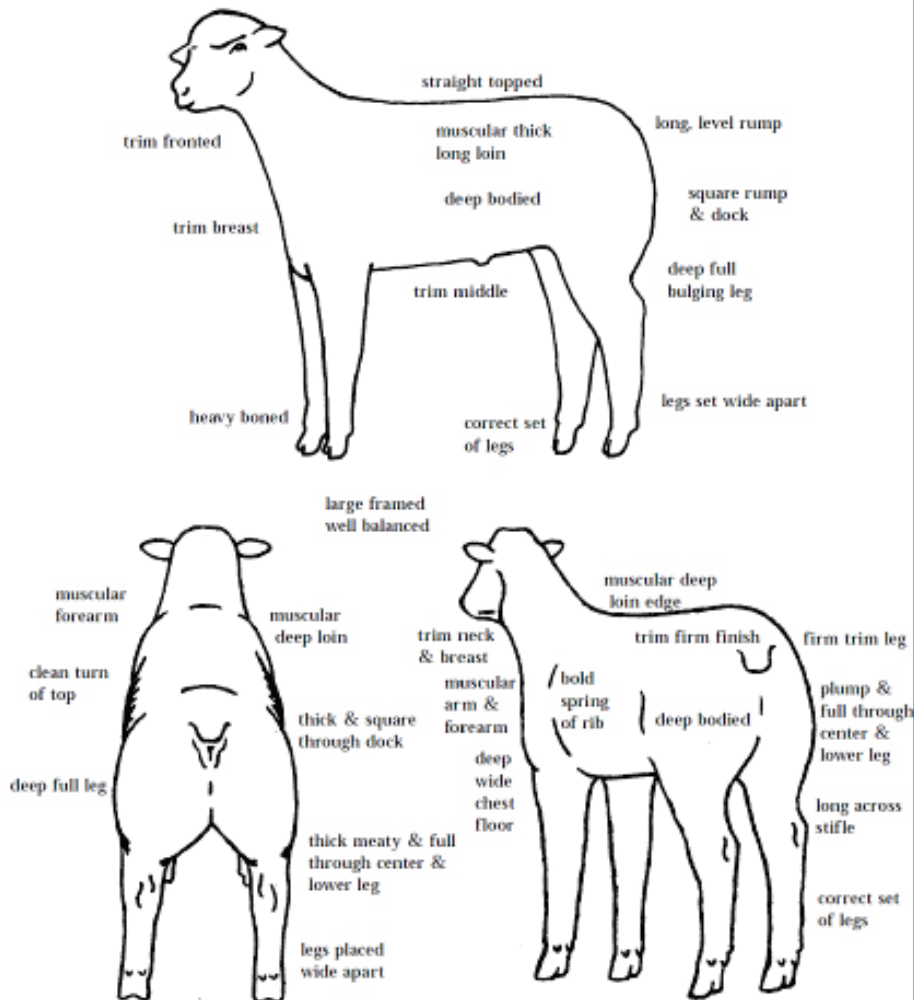
An all-natural whitening spray that offers a natural appearance. When applied this product dries quickly with warm air. Depending on how bright you would like the animal, you may have to apply several light applications to obtain the desired look.



Do You Know the Parts of Your Lamb?

Know what your dealing with before you start shearing!

Ideal Market Lamb





Showing Your Lamb

Where to Start...

The key to show ring success is to present your animal as efficiently and effectively as possible. A good show person will always make the animal look the best that it can, emphasizing the good points and de-emphasizing any weak points.

Don't crowd your animal in the line of exhibitors waiting to enter the ring – leave plenty of room between you and the next exhibitor. Bring the lamb into the ring slowly, keeping a nice constant speed. Move the lamb with one hand under the jaw and the other hand either on the dock or behind the ears. Your lamb will be nervous, so make sure to stay calm and in control. Remember that the first impressions that a judge has of you and your lamb is very important.

Once in the show ring, move into position and set your lamb up. Always set the legs closest to the judge first. You will have the most control if you reach over the top of the animal to set the legs with your free hand. Set all four legs squarely under the lamb. NEVER block the judge's view of your lamb.

Showmanship Etiquette

- Be sure your clothes and boots are neat and clean. Check the show guidelines or standards for specific clothing requirements.
- Tie long hair back away from your face.
- Always be on time for your show.
- You should appear keen but relaxed.
- Always accept the judge's decision in a sportsmanlike manner. Remember that the class is not over until everyone exits the ring; keep showing until you are out of the ring.
- Keep your animal under control at all times and keep an eye on the judge to watch for their directions.
- Avoid grandstanding or showing off!
- Always shake hands with the champion and reserve champion – sportsmanship is a big part of the show!



GETTING YOUR LAMB READY FOR SHOW



It is recommended to shear your lamb in early spring. The new growth of wool will come in cleaner and brighter. Never shear a sheep with excess moisture in the coat.

Strategy will ensure your lamb looks smooth and well fit on show day. Begin by washing your lamb as often (and as close to show day) as needed. Special attention should be given to the area under the legs where dirt gets collected.

Card the wool after each washing while the wool is still damp. The wool should always be carded after each washing. Use a card with bent teeth for lambs. Carding while the fleece is still damp helps to straighten the wool fibers and results in a firmer, smoother trimming job.

After your lamb is sheared, blend the underbelly up into the body coat.

After blending the lower side area, lightly trim other areas to remove uneven wool. Once the uneven wool has been removed and re-carded, the sheep is ready for a final hand trimming.

Trim hooves early and keep them trimmed as needed until show day. Ideally, the last trimming should be done a week before the show to permit time for healing of any mistakes or sore spots. Hooves should be very clean for the show, but they do not need to be polished.



GETTING YOUR LAMB READY FOR SHOW

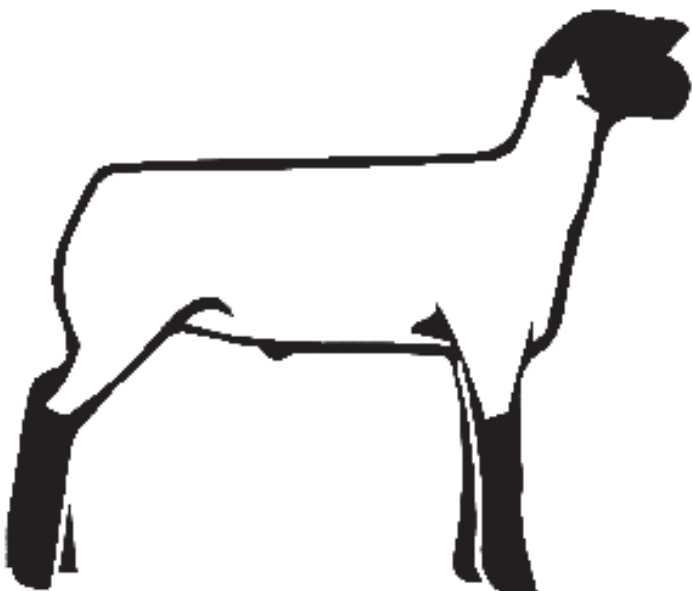


Use Lamb Tubes or Sheep Blankets with Neck to keep the fleece packed and clean.

It is discouraged to use a halter on your lamb in the show ring, however, a halter is a great tool to use at home while training your lamb to walk and stand correctly.

Develop the hind quarters by tying your lamb on an angle with the front feet higher than the back. Remember that exercise is good for your lamb.

If available, a trimming stand will make the job of trimming and fitting easier.





GETTING YOUR LAMB READY FOR SHOW



- 1. Wash your lamb before every show day, then blanket the lamb to keep the fleece white and bright! Whitening shampoos are available at RK.**
- 2. Black pants and a white top are suitable attire.**
- 3. Always be on the opposite side of your lamb when the judge is looking. Never block the view of your lamb.**
- 4. Sheep are shown without halters. When placing your lamb in the show ring, place the front and back feet squarely. This will accent the muscle structure of your lamb.**
- 5. Practice showing your lamb at home! This will help the lamb to behave in the show ring.**





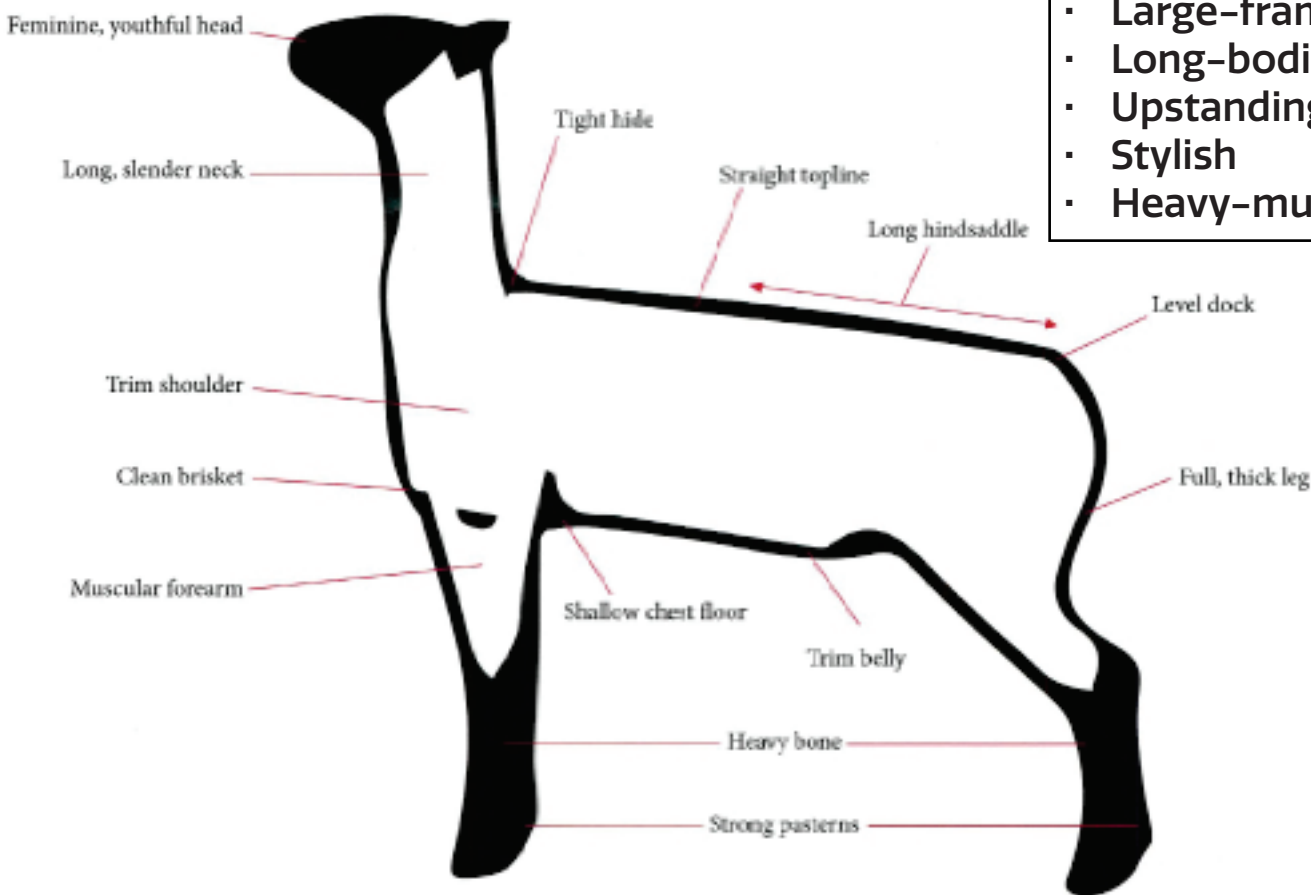
GETTING YOUR LAMB READY FOR SHOW



A Good Quality Lamb

This Lamb is:

- Balanced
- Large-framed
- Long-bodied
- Upstanding
- Stylish
- Heavy-muscled



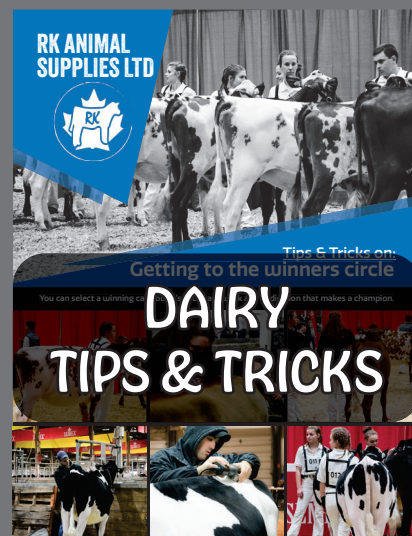
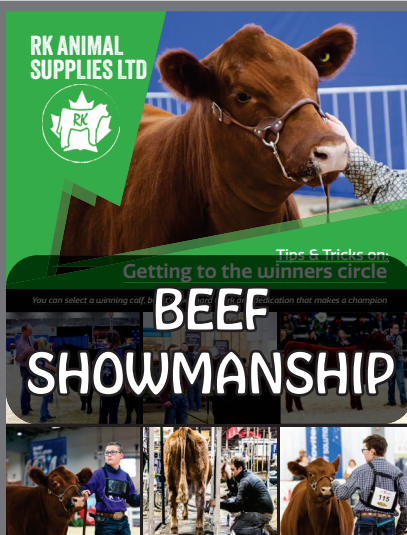
AVAILABLE AT RK ANIMAL SUPPLIES



Show Equipment Checklist:

- Blower
- Trimming Stand
- Shovel
- Broom
- Rope Halter
- Extra Rope Halter
- Show Halter
- Water Bucket
- Feed Bucket
- Rag to wipe face
- Clippers
- Blades
- Hoof Trimmers
- Wool Card
- Curry Comb
- Smart Sensation Brush
- Sullivan's White Out
- Sullivan's Clear Choice
- Sullivan's Silk
- Sullivan's Healthy Hide Lotion
- Sullivan's Cool Blue
- Shapley's Easy-Out
- Weaver's ProHair 100
- Hand Shears
- Extension Cord
- Sheep Blanket
- Lamb Tube
- Show Clothes
- Show FreshH2O

EDUCATIONAL FLYERS AVAILABLE AT RK



RK ANIMAL SUPPLIES LTD.
 7647 WELLINGTON COUNTY ROAD 10
 MOOREFIELD, ONTARIO, NOG 2K0
 1-800-440-2694

RKANIMALSUPPLIES@XPLORNET.COM ~ WWW.RKANIMALSUPPLIES.COM