

# RK ANIMAL SUPPLIES LTD



Tips & Tricks on:

## *Getting to the winners circle*

**YOU CAN SELECT A WINNING CALF , BUT IT'S YOUR HARD WORK AND DEDICATION THAT MAKES A CHAMPION.**





**Never think you will break any animal. A calf that doesn't shy away in a pen and shows curiosity by coming up to you will be easier to train and to lead!**

## Buying a calf?

*You must take the following into consideration:*

- What breed do you want to show?
- What age animal do you want to show?
- What is your final goal for the show season?
- When making a purchase, make sure to stay in your price range!
- Visit an established breeder to buy from.
- Choose a quiet animal.
- Before you head out to purchase an animal, look in your barn. You may just find something in there that you can be proud of!

## Showing? *A judges perspective.*

The judge likes to see a well presented animal and handler. The animal should be clipped and fit to emphasize its good qualities. Have your animal well trained so that the judge can view the animal both walking and standing.

Don't get discouraged if the judge places you differently than you expected - every judge and every day is different. Try to keep focused on your cattle program, developing what YOU like and what YOU are happy with. This will keep more consistency in your herd and prevent you from following judge's trends.



## In the ring? *Protocol & expectations*

- Be on time - first impressions are lasting!
- Follow the dress code and all show rules.
- Be courteous to fellow exhibitors both in and out the show ring.
- Always show your positive attitude.
- Have fun while you're showing! If you enjoy yourself, it will show!



*Feed grain twice (morning and night) and hay and water three times (morning, noon and evening) each day while at the show. When traveling, feed and water after you have arrived - your animals are more likely to eat and drink.*

# FEEDING & CARE OF YOUR SHOW ANIMALS

Proper feeding routines of a show calf start at birth. Calves should have access to creep feed grain and lactating cows should be supplied a grain supplement. A consistent feeding program will ensure you have a healthy, well conditioned animal when you need it.

Many feed companies have a special feed mix developed for show animals. Always make sure to feed top quality hay and free choice of clean water, salt, and minerals. Keep in mind the following:

- Pick up uneaten feed to prevent overload. This will keep your cattle's appetite more aggressive.
- Show cattle should get lots of exercise. This will help muscle grow and prevent over conditioning. It is easier to try and take weight off cattle, then you aren't trying to catch up one month before the show.
- You should have your animal wormed every 3 months to keep their hair healthy. Consult your local veterinarian concerning a health program.
- Keep your show animal in a clean, well ventilated shelter with outdoor access. This will help with their skin and hair coat staying healthy.
- Before you go to your first show, feed your animal from a feed tub and water from a clean water pail. Do not use feed tub or pail for anything else but feeding and watering your animal.

By feeding your show animal a complete feed ration accompanied by ShowBloom, you will notice that the skin and hair coat take on a healthy and shiny appearance. ShowBloom will help prevent hair from dulling or fading in the summer sun.

Simply feed 8 oz. a day per head!

### What is ShowBloom?:

A natural protein supplement rich in brewers yeast and fortified with vitamins.

- Increases feed intake and utilization.
- Promotes healthy skin conditions.
- Aids muscle development and firmness.
- Produces outstanding hair growth and a shiny, healthy coat!



Winning Fill can be fed as the sole ration or with a grain mix! Simply feed prior to or during a show to create the finished look!

### What is Wining Fill?

A unique blend of chopped forages, steam-flaked grains, and molasses.

- Feed daily for incomparable bloom, or just prior to showing for a fuller, bigger body look.
- Provide plenty of clean, fresh water at all times

# Training your Calf

HINT:  
RUN THE RADIO IN THE BARN  
SO YOUR CALF WILL GET USED  
TO NOISES.

*Remember to work around your animal in a calm manner - never raise your voice or hit your calf.*

## Where to Start?

1. Tie up your calf with a halter for 20 to 30 minutes at a time for a few days until it get used to the halter. Do not leave your calf unattended. Stay with the calf so it will be calm and comfortable. Use a quick release knot to tie your calf. You can release the knot easily and quickly by pulling, even when under tension.



2. To train your calf to lead, take it out frequently for short periods of time. If the calf balks, pull it to one side or step behind the calf and urge it forward. If the calf tries to run, pull it in a circle.
3. To train your calf for a show, walk backwards slowly, leading the calf by the halter with your left hand. Teach the calf to walk beside you with its head slightly lifted, and pause frequently to stand the calf squarely. Start the calf moving forward with a slow walk.
4. Use a slight tug on the halter, or pressure on the shoulder, if the position of the feet needs to be changed. If the calf is high over the topline, pinch gently in the loin region.
5. Make sure to teach your calf to place its feet in the desired position.



The ideal position for your calf to be standing is:

- Head raised.
- Front feet even, directly under the animal's shoulders, about 10-15cm apart.
- One hind foot slightly ahead of the other (about 20-25cm). Remember that the hind foot closest to the judge should be the farthest back.

To show more length, a slight stretch is desirable, but be careful not to show a weak topline. If your calf's loin is weak, you can try to correct this situation by applying slight upward pressure on the underline behind the front legs.



# Tips on Cleaning Your Calf

*A clean calf will grow hair faster. It is recommended you wash your calf 2-3 times a week depending on how dirty they get. Also be sure to rinse your calf to remove all the soap residue.*

Routinely rinsing and washing cattle with Sullivan's Clear Choice or Sullivan's Vita Hair Volumizer is important - these products will not strip the hair of its natural oils and shine.

Be careful not to get water in the ears or their ears will go limp for several days!

Use a foamer when using Sullivan's Vita Hair Volumizer or Sullivan's Clear Choice without wetting the animal first. By wetting the animal first, it creates a water barrier. These products have a releasing and lifting effect on dirt and needs to come in direct contact with the dirt to be effective. This will ensure the top results that you desire. By now using the foamer, you are now able to wet and soap at the same time!

Use a stiff brush like the Rice Root brush to scrub the animal thoroughly, including the brisket, front legs, and all the way under the belly.

Make sure to rinse all the soap off the calf's hair or it will become harsh, dull and the calf will have dandruff.

A soft cloth can be used to clean all the dirt and wax from the inside of the calf's ear.

Dry the calf by squeezing excess water from the hair through brushing.

Blow hair dry in the direction you were brushing. Don't forget to dry the legs and belly. Sullivan's Kleen Sheen or RK Pure Magik Sheen can be applied at this time.

Wash your calf often enough to remove all stains from the coat. Do the last wash on show day. Be sure to start early in the day so the calf is dry before she steps into the show ring!



# Combs & Brushes

Other great grooming aids to use are combs and brushes. These combs and daily hair care brushes are used at home to help stimulate the hair by massaging the scalp. All combs and brushes have synthetic material in the plastic teeth that are gentle to the animals hide.



## Black Knight Brush

An excellent long-bristle brush for grooming your animal.



## Denman Brushes

Preferred by professional fitters, this brush is heat resistant, making it able to withstand top-line blower heat. The anti-static rows of close-set nylon bristles provide maximum grip and control for smoothing, shaping and setting the top-lines. Available in 7 or 9 row, as well as white or black bristles.



## Dandruff?

Spray Sullivan's Revive on hair coat for healthy skin and hair. This product promotes healthy hair coats, stops flaking, conditions skin, eliminates and cuts through soap scum left on the hair. No need to rinse out. Spray hair with Revive 3-4 times a week - this restores the natural oils and conditions dull, dry hair.



## Stains?

Sullivan's Bright Lights - Fantastic for highlighting and enhancing hair. This product brightens white hair and intensifies coloured hair. Use Bright Lights to wash away yellow tint, sun faded and stained hair.

Sullivan's Knock Out - Simply spray directly onto stained area brush in and blow out.



# Let's Start Clipping!



*When clipping, it is always better to make more passes than trying to do it all in one stroke.*

The Heiniger Progress clipper is lightweight, used for the head, body, and tail of your animal. The Aesculap Bonum clipper is an excellent low-weight and low-noise cordless clipper for body clipping. Wahl clipper for top lines and belly hair.

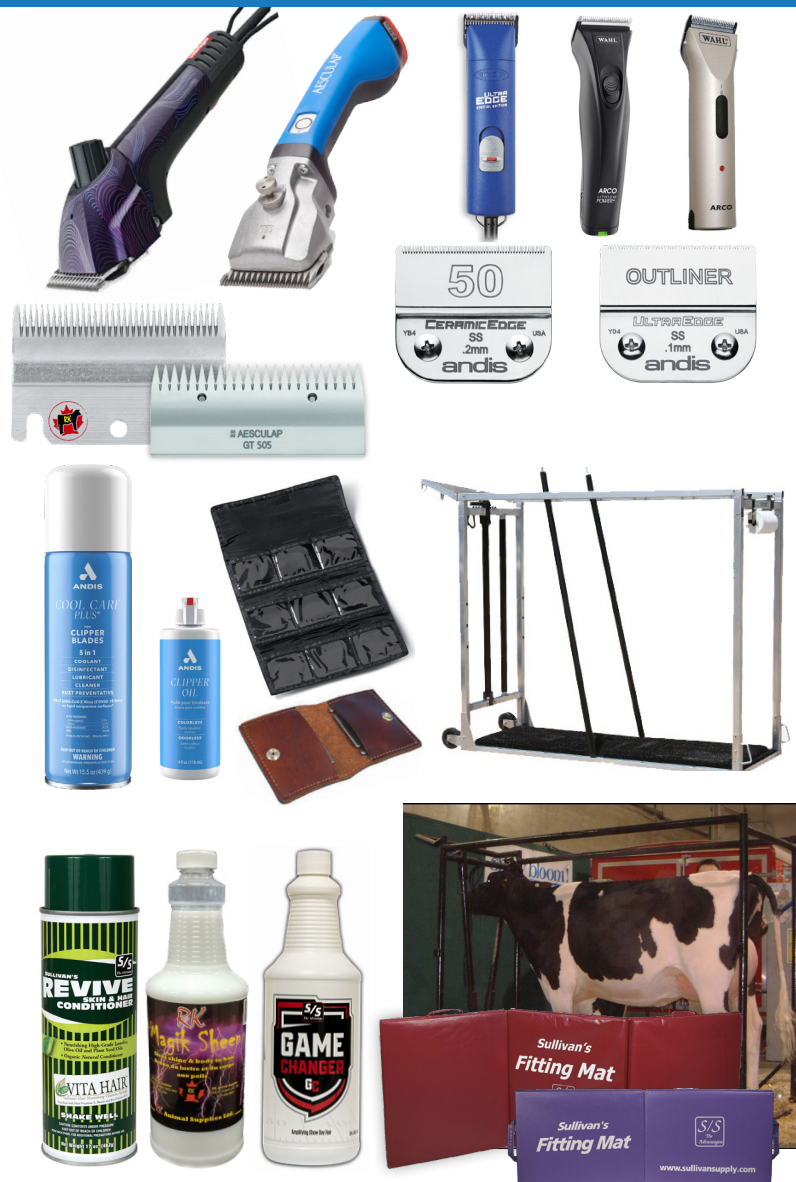
When clipping the body, use an RK Thin blade to eliminate the lines left behind by your thicker blades. Use with GT 505 Aesculap blade. Use an Andis #50SS or Outliner blade for udder clipping to get that close finish.

Don't forget to use Andis Cool Care Plus often to ensure your blades never get dry. Cool Care is a cleaner, coolant, disinfectant, lubricant AND rust protection formula used by professionals to maintain longevity of your blades.

To keep your blades at their best, store blades in a leather blade wallet or blade pouch.

Your animal should be clipped on a regular basis. Clip the animal only after you have washed and dried the hair. When clipping prior to show, keep hair light with product to ensure a crisp clean cut. To give the hair more lift, use Sullivan's Revive, RK Pure Magik Sheen or Sullivan's Game Changer.

Use a fitting crate when fitting your animal - it was designed with the fitter in mind! It is an open concept crate that allows access to all parts of the animal while standing stationary. This crate ensures the safety of the handler during clipping and fitting procedures. You can use the Sullivan's Fitting Mat at shows to keep your knees and feet are more comfortable while grooming your animal.





# TIPS FROM THE PRO'S

## **Sullivan's Powder'ful:**

Powder'Ful will add volume to hair and touch up stained and faded hair. It has a powdery texture and can be used to add volume to top-lines.

## **Sullivan's Touch-Up Paints:**

As a final touch of colour before entering the show ring, try Sullivan's new colours!

## **RK Pure Clear Magik:**

Ideal for dairy cattle toplines, this product delivers a long lasting yet manageable hold. Just spray onto hair and immediately comb hair to desired shape.

## **Sullivan's Final Bloom:**

Fantastic oil with a pleasant scent, this product will help to freshen up your animals hair. Makes a great light show day oil that will deliver an amazing deep shine to the hair. Less grease with all the shine you need.

## **Sullivan's Flare:**

Sullivan's new Flare amplifies hair dimension and shine without weighing the hair down. Works on all hair types and all temperatures.

## **Babyliss Pro Top-Line Blower:**

Lightweight, high performance blower with 2 speeds, 3 heat settings AND a cool shot button. It comes with a snap-on concentrator nozzle and features a removable filter. The Far-Infrared Heat that penetrates hair from within, results in faster drying with less damage.

## **Sullivan's Air Express III:**

The aerodynamic front end increases air velocity for more power! There is a heating element for those cooler days (only used when under 50°F).

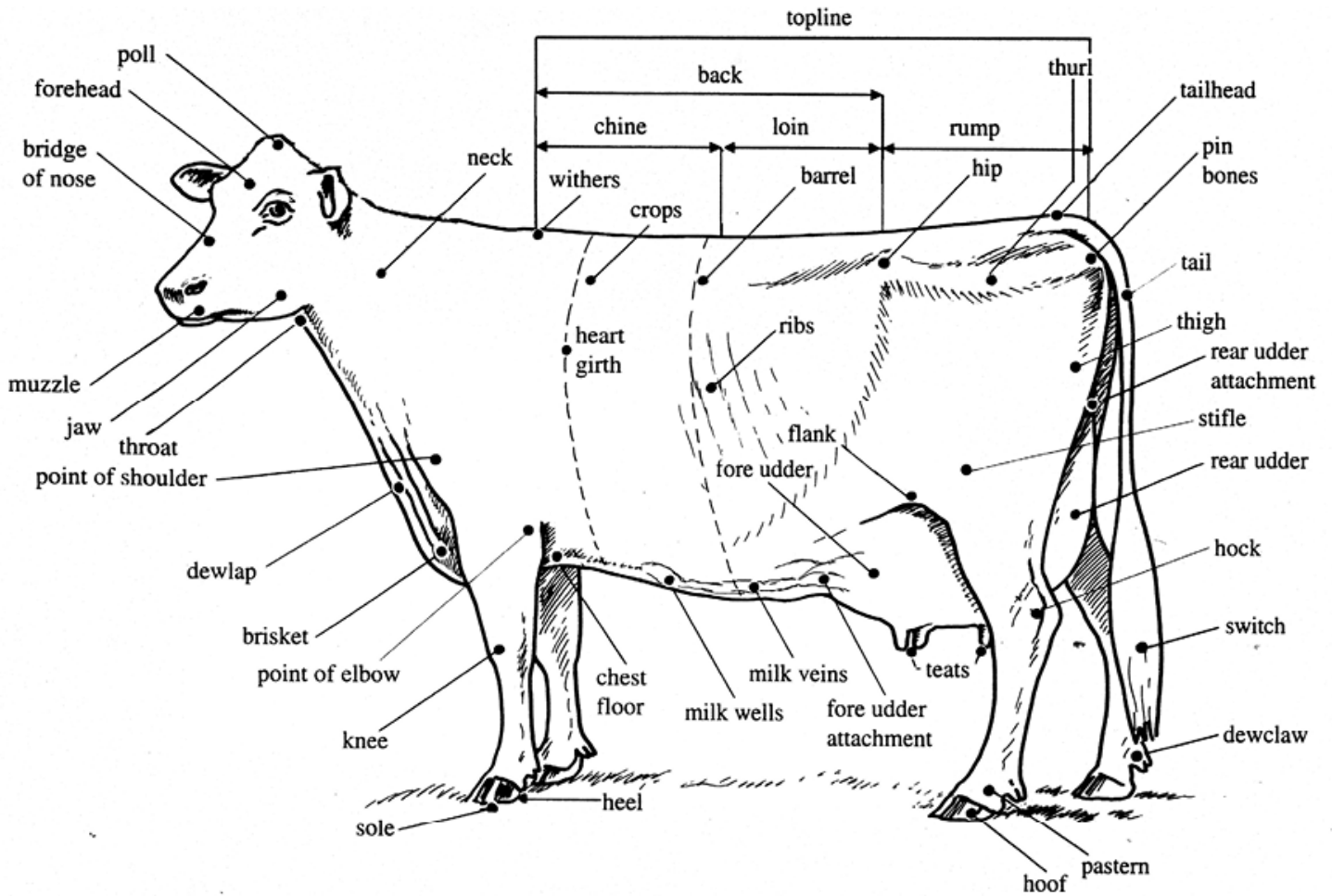






# *Do you Know the parts of your calf?*

*Know what your dealing with before you start clipping!*





# Getting Show Ready

HINT:  
PRACTICE CLIPPING ON CATTLE WHO WILL NOT BE SHOWN FIRST!

*Remember to work around your animal in a calm manner - never raise your voice or hit your calf.*

## Clipping

Do the first clipping at least 3 weeks before the show and the fine trimming three to seven days before the show. New growth of hair will be easier to clip the next time you clip. It is a good idea to clip your calf earlier in the summer to introduce it to the clippers and give you some clipping practice. If you have never clipped a calf before, ask for guidance from an experienced fitter because each area of the body requires its own specific clipping technique.

## Grooming

Several minutes of daily brushing and combing will condition the coat and improve the hair. Brush with the grain of the hair, not against it. The hair on the topline of the calf should be brushed forward. Brushing your calf also has several advantages:

- Removes dandruff, dirt, and old hair.
- Brings out the natural oils.
- Stimulates circulation.

## At the Show

- Arrive early!
- Make sure your calf is securely tied with a cross-tie.
- Remain with your calf so it stays calm and comfortable.
- Don't fuss with the calf, let it rest after the ride.
- Pick up headband/stall card from the show organizer.
- Know the time schedule for the day.
- If possible, wash the calf early in the day.
- Bed, feed and water the calf.
- Have someone with the calf at all times to remove manure.
- Be friendly and courteous to show visitors.
- Assist other 4-H volunteers and members.
- Be a good sport!



*When clipping, it is always better to make more passes than trying to do it all in one stroke.*

## *In the Ring*

Have your calf ready and waiting to enter the ring when show time comes. The contest begins the minute you enter the ring, so bring your calf into the ring showing as much style as possible. You and the calf need to be alert every minute during the judging.

To do well in showmanship, you have to concentrate on your main purpose in the ring - show your animal to its best advantage! The show person must always be in control of the animal, be aware of what it is doing, and of what the judge wants the show person to do while in the ring.

You should enter the ring and move in a clockwise direction. Lead your cattle with a short lead strap that is held in about two loops in the left hand. The best control is usually achieved when your hand is close to or at the halter. When entering the ring, you should quickly walk facing forward until all entries are in the ring. Then, turn and walk backwards in an upright position. Do not crouch or squat.

The judge will then start to make signals as the class continues:

- A circular motion of the hand to indicate the class to walk. A faster motion indicates the judge wants a faster speed of walk.
- Upheld arms with palms out indicates STOP. On that signal, set up your calf as quickly as possible.
- A beckoning motion of the arm is used to call someone into line or change direction. Be sure to respond quickly.
- The judge may also walk up to your calf and gently grab a layer of skin in the heart girth area (behind the front legs). To show your calf, you should bring its head towards the judge.

Do NOT adjust the hind legs by stepping on the calf's feet. Use pressure on the halter and point of the shoulder. When the judge moves around your calf, you should quickly move out of the way so that you do not obstruct his/her view. When the judge motions to a competitor to come into the center of the ring and form a line, the halter can be transferred to the right hand and you can walk forward at a quicker pace. Set the feet up again.

### **1. Appearance of animal:**

- Condition, ideal weight
- Grooming, clipping, cleanliness

### **2. Appearance of exhibitor:**

- Clothing, neat and tidy
- White outfit preferred

### **3. Showing the animal in the ring:**

- Leading and standing
- Showing animal to best advantage
- Poise, alertness and attitude

Your personal poise, alertness, and neatness are important in the showing too. Keep an eye on you animal and be aware of the position of the judge at all times. Don't be distracted in the ring. Respond quickly to the judges requests, be courteous, and always be a good sport! Make sure to show the animal and NOT yourself. Keep showing until you have exited the showing!



# CLIPPING YOUR DAIRY HEIFER FOR SHOW 101



## Step One -The Tail

This will give the heifer time to adjust to the sound of the clippers, and give you an easy place to start. Start clipping about 2 or 3 inches above the long hair of the switch, and stop about the same distance from the vulva. This will leave you enough hair to blend into the top-line. You want to clip against the lay of the hair. Don't forget to trim the hairs around the vulva.

*Use Heiniger Blade Set 31-23.*

## Step Two -The Body

Keep the clippers flat against the body so you don't cut the heifer. You will want to dip towards the top of her back. Make sure to leave about 2-3 inches of hair on both sides of her top-line. This will be used to blend and shape her top-line. *Use Heiniger Blade Set 31F-23, for ribs use an RK Thin with a GT 505.*

**Tip - When you're clipping, ensure to make long steady strokes versus short quick strokes. Short quick strokes make the hair look choppy and also leave distracting clipper marks. You may have to run the clippers with the hair to smooth out any lines. Washing your heifer may remove some clipper lines as well.**

## Step Three -The Belly

Experienced fitters will blend the belly hair into the body of the heifer. This takes practice but can make the heifer look deeper. *Use an Andis Blocking Blade on small clippers.*

**Tip - The blade sets are only a suggestion. Use the blades that you feel will give you the desired look you are looking for.**

## Step Four -The Legs

Trim hair off legs. This will help the heifer appear to look cleaner and flatter in the bone. Pay extra attention around the hocks, this is an important place to get all the hair, which can be hard to do. Make sure to dip the inside of the legs all the way to her belly. Don't forget her hind legs, paying special attention to get all the hair around her knees.

*Use a Heiniger Blade Set 31F-23, or an RK Thin with a GT 505.*



# CLIPPING YOUR DAIRY HEIFER FOR SHOW 101



## Step Five -The Hooves

This is one of the hardest places to get all the hair. Take it slow and hold the clippers in different directions. Be careful as the heifer will be more likely to kick while working on the hind legs. Placing your hand on her hip or thigh can help keep her calm.

*Use a #40 blade on a small clipper, a Heiniger Blade Set 31 F-23, or a 31-23 set on a large clipper.*

## Step 6 - Once Over Of Your Heifer

Before moving on to the heifers head, go back over and look for any spots you may have missed. First brush off any access hair that has fallen as you have clipped your heifer. Look behind the point of her elbow, underbelly, the insides of her legs, and right above her hooves. You may have to pull the skin back around her elbow to get the hair behind it.

*Tip - You may need to turn the clippers in different directions to get all the hair. Try different methods to develop your own style. Remember to make long strokes and keep the clippers as flat to the bone as possible. You also may need to pull the skin back to make it easier.*

## Step Seven -The Head

Clipping the heifers head can be challenging, and you may want to get someone to help you hold her. Start by clipping the brisket and throat. You'll want to pull on the skin to make it easier. This will get her used to the sound of the dippers near her head. You'll notice that she will have hair swirls, you will have to dip in several different directions to ensure an even cut. The ears are an important place to dip tightly. Make sure to dip all the hair, both on the inside and outside of the ears. You may want to use a smaller dipper to make the ears look cleaner. The last step of the head it to check underneath her halter. This hair is hard to see and easy to forget. A dipping chute can help; it will take time, so make sure to be patient.



# CLIPPING YOUR DAIRY HEIFER FOR SHOW 101



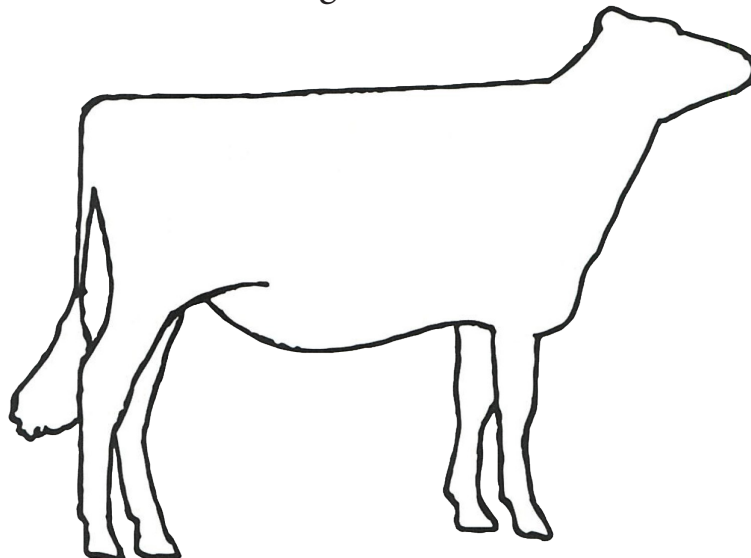
## Step Eight - The Topline

Use a topline blower and topline brush to move the hair forward towards her neck from her tail. Hold the topline blower on an angle so most of the heat is going into the topline brush. At this point, you will want to use some topline powder to help the hair stand up. To finish the shoulder, tie the heifers head up at show level (the level you would hold it while in the ring). Slowly dip against the hair you left for the topline, taking it up to a flat straight line. You want to blend the hair from the shoulders, not cut it off to make a point. Clipping a heifers topline takes a great deal of practice, so don't be discouraged if you make a mistake; practice makes perfect! The goal is to make your heifer look even and angular, so look from behind to see which side needs more hair taken off. Ensure to be careful, once the hair is dipped there is no way to put it back on! A finished topline should make the heifer look straight across the top when the judge is looking from the side. Blend any standing hair into the body of your heifer.

**Tip - To keep your hand steady, you can rest the clipper head on your finger. Throughout the process of clipping her topline, you should brush her off and blow the topline up again to see what it looks like.**

## Step Nine - The Rump

You may want to trim hair on a heifer with high pins pretty dose. Your objective is a straight, level topline. At the tail head, you want a level looking rump. Clean out the hair at both sides of the tail head. Use a Heiniger Blade Set 31F-23 or 31-23.





# CLIPPING YOUR DAIRY HEIFER FOR SHOW 101



## WHAT YOU SHOULD KNOW & DO BEFORE YOU HIT THE ROAD

- Time and place of show, cost of entry fees, specific show rules.
- Don't forget copies of your registration papers!
- Make sure your cattle are clearly tagged or tattooed.
- Ensure your cattle are healthy; you don't want to spread disease.
- Check for lice, ringworm, warts, etc.
- Wash your heifer before you leave for the show, this will give you more time for a quick wash at the show before fitting.
- Make sure everything you need is in your show box!
- Make sure all your leather halters and clothes are clean and show ready.

## WHAT TO PACK FOR SHOW DAY

### *For You:*

- Proper show attire, closed toe boots, show harness and number, class order list, show rules, entry fees, and your heifers registration papers.

### *For Your Heifer:*

- Grain, hay, straw, water pail, feed tub, halter, cross tie, and show halter.

### *For You:*

- Proper show attire, closed toe boots, show harness and number, class order list, show rules, entry fees, and your heifers registration papers

### *Washing & Fitting Supplies:*

- Wash pail, shampoo, sponge, hose and nozzle, Mini Circuiteer blower or Sullivan Air Express blower, topline blower, long bristle brush, clippers, various clipper blades, scissors, Final Bloom, Flare, touch-ups, adhesives, and a tail switch if needed.

### *Medical & General Supplies:*

- Medication for bloat, infections and pneumonia, thermometer, show box, chairs, extra halter and cross tie, paper towel, fly spray, bag balm, pitch fork, shovel, broom, and leather cleaner.

### *For Your Stall Display:*

- Water pail, shavings or straw, fans, fan stand, stall cards, back drop, barn banner or sign, pliers, nails, hammer, screw drivers, and feed tubs.

## AVAILABLE AT RK ANIMAL SUPPLIES



WORK BEGINS

# at home



**WANT MORE TIPS?  
WE HAVE SOLUTIONS  
FOR ANY PROBLEM  
YOU MAY FACE!  
1-800-440-2694**

## Show Day Routine

- Before every show, read the rules - each show is different.
- Plan your show day early so you are organized and relaxed.
- Have your animal clipped and washed a few days before the show. Your animal is more at ease to work on at home.
- Allow your animal at least 2 hours to settle into it's new surroundings when attending a show.
- You may have to wash your animal when you get to the show. If you wash the day before and the animal is still clean a thorough rinse is sufficient.
- Be sure your animal is thoroughly blown dry before putting them in the stall you have prepared.
- Make sure to be ready for your scheduled show time by preparing your animal one hour before your show time. Don't rush, you and your animal will show better with less stress.
- Feed grain twice (morning and evening) and hay and water three times a day (morning, noon, and evening) each day while at a show.
- If leaving cattle at a show overnight, make sure they are securely tied with a rope halter and safety cross-tie.

*Before you leave for the show you should go over this list of show equipment you'll be needing.  
Make sure you have everything to save time later!*

- Blower
- Blocking Chute
- Turbo Fan
- Fork
- Shovel
- Broom
- Extra Rope Halter
- Water Bucket
- Feed Pan
- Water Hose
- Clippers
- Blades
- Combs
- Shampoo
- Show Halter
- Scissors
- Extension Cord
- RK Pure Clear Magik
- Sullivan's Powder'Ful
- Babylliss Topline Blower
- Sullivan's Final Bloom
- Sullivan's Revive
- Sullivan's Game Changer
- RK Pure Magik Sheen
- RK Pure Remove It
- Touch-Up Colours
- Denman Topline Brush

*Good luck  
at the show!*



RK Animal Supplies Ltd.

7647 Wellington County Rd. 10 RR#1 Moorefield, Ont. N0G 2K0

www.rkanimalsupplies.com ~ rkanimalsupplies@xplornet.com ~ 1-800-440-2694